

Instructions for Installing Campaign Manager

Installation Preparation

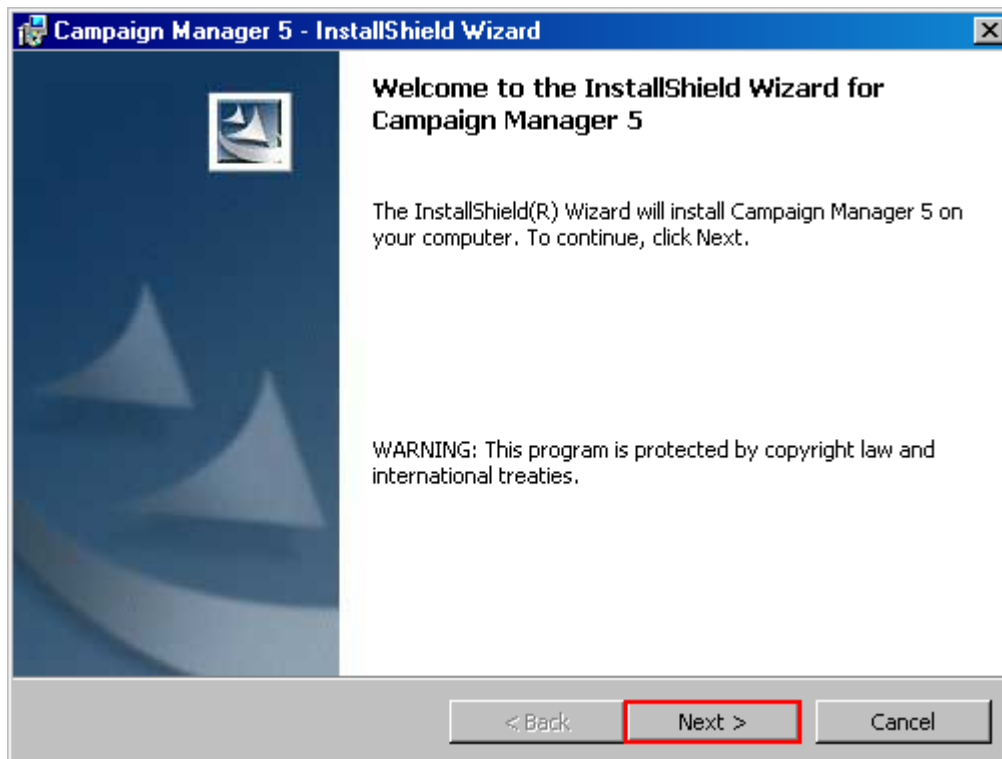
Before beginning your installation of Campaign Manager, have the following information on hand and ready to be entered into the program.

- Customer ID Number
- Registration Code
- Confirmation Key

Make sure to close all open programs and documents before proceeding with the installation.

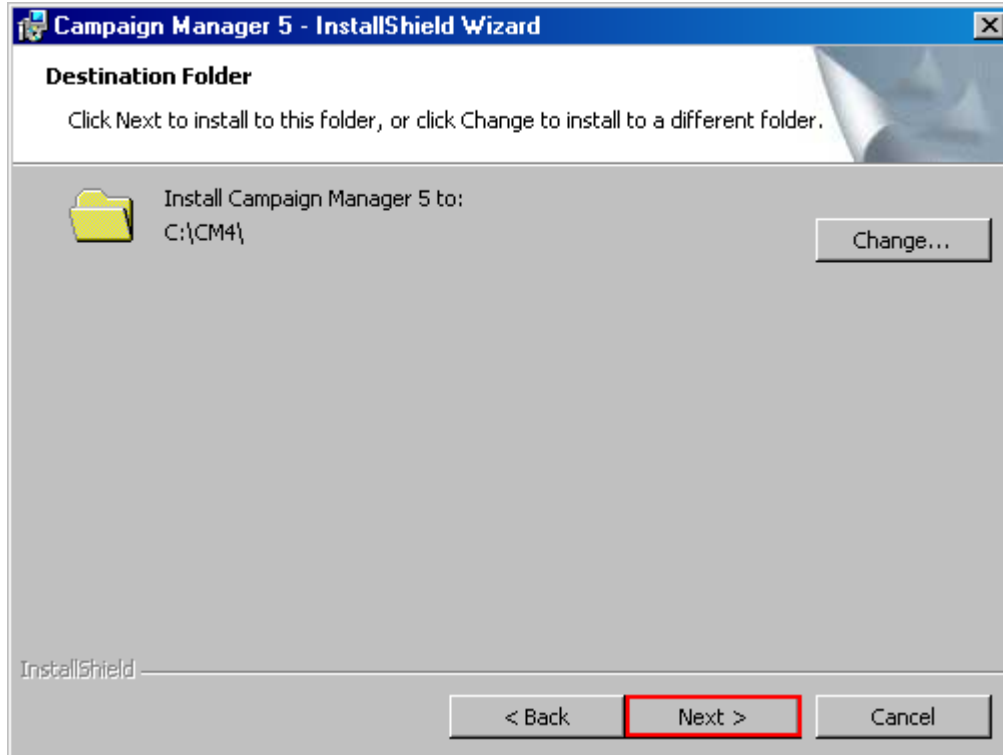
Step 1 – Insert your Campaign Manager disc into your CD-ROM or DVD-ROM drive.

Step 2 – When this dialogue box (shown below) appears, click **Next**.

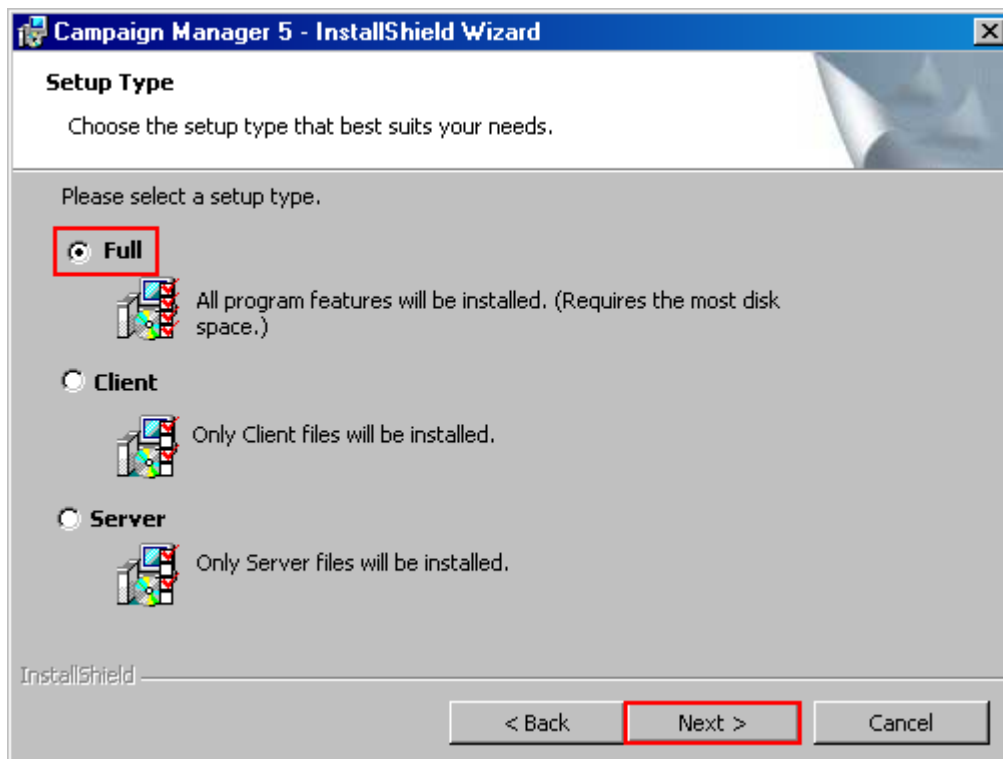


Continued on next page ►

Step 3 – Accept the default installation directory of **C:\CM4** and click **Next**.

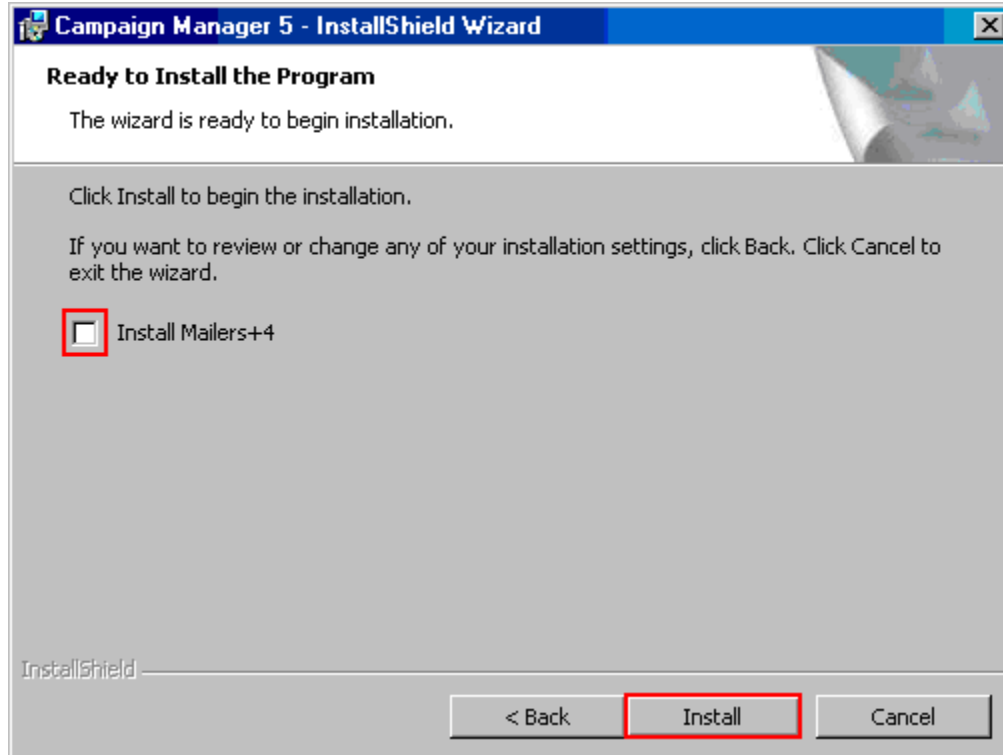


Step 4 – Leave the default setup type selection of **Full**, and then click **Next**.

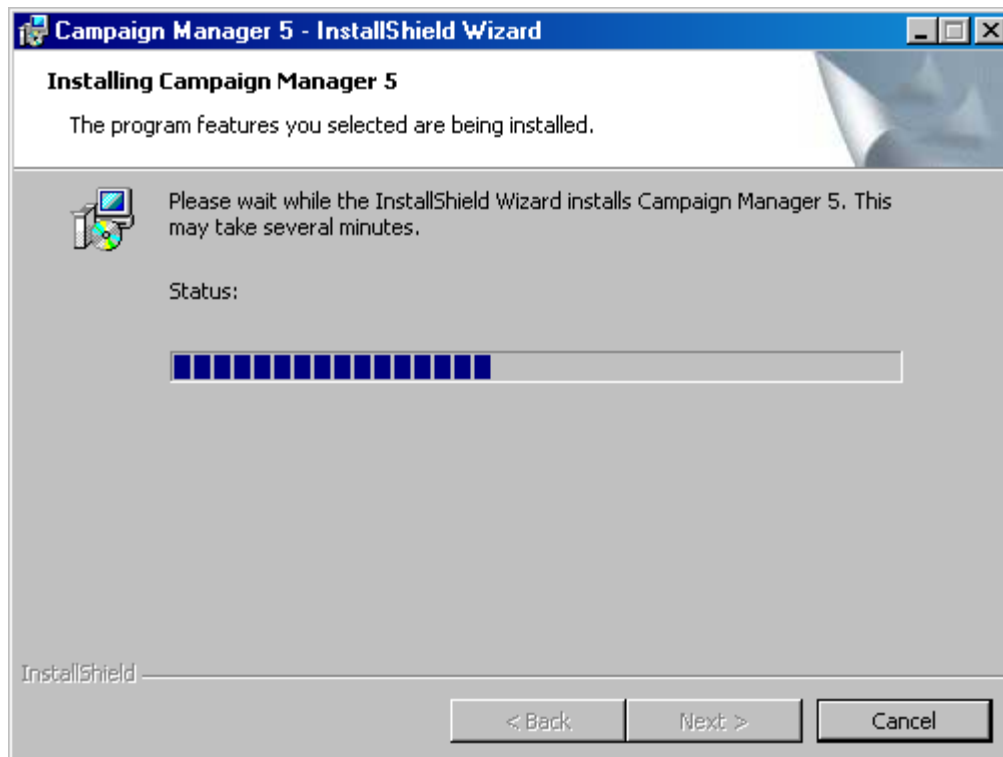


Continued on next page ►

Step 5 – Click to deselect the **Install Mailers+4** checkbox, and then click **Next**.

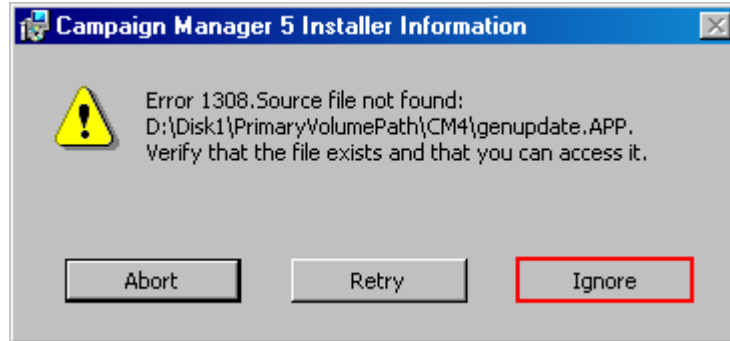


Step 6 – Wait for the Installation Wizard to copy the program files to your computer.

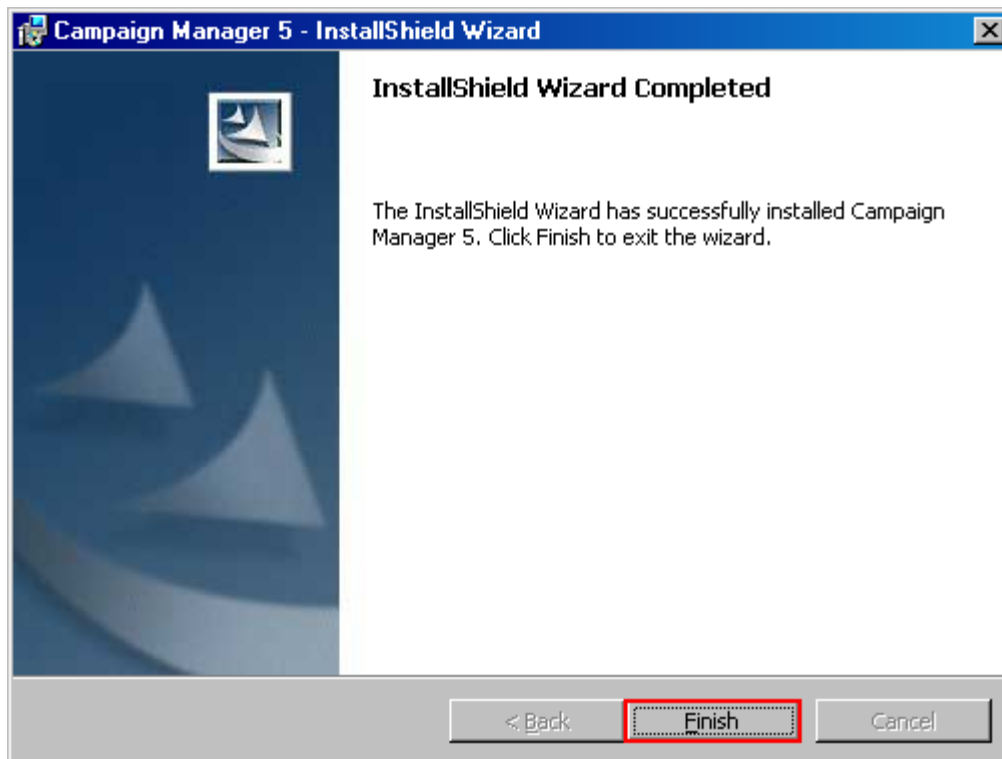


Continued on next page ►

Note – If the following error message appears during installation click **Ignore**.

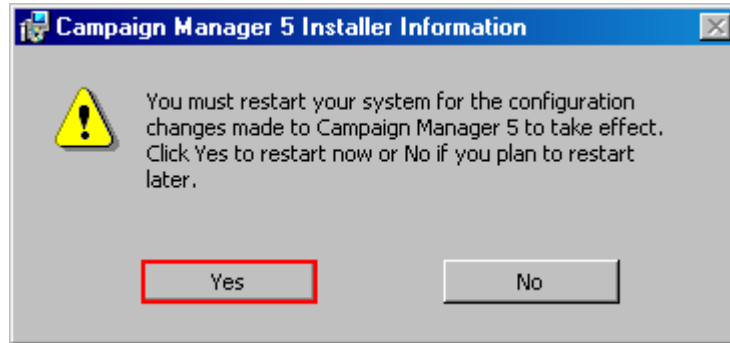


Step 6 – Click **Finish** on the dialogue box that appears once installation is complete.



Continued on next page ►

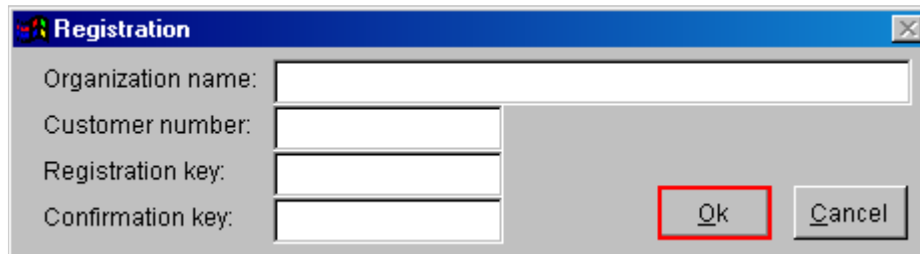
Step 7 – Click **Yes** on the dialog box to restart your computer and complete the installation process.



Step 8 – Once your computer restarts, double-click the Campaign Manager Shortcut icon now located on your desktop.



Step 9 – Enter the registration information in each field as provided to you and then click **Ok**.



Your installation is now complete!

At this point you need to add your user(s) and dataset(s) to the program. For instructions on both of these activities, please refer to the “Instructions for Adding a Dataset” and “Instructions for Adding a User” documents.

If you have any further questions regarding the product please contact your Aristotle Account Manager.

If you have any issues with this installation, or any other aspects of the product, please contact Aristotle Technical Support at 1(800)243-4401 ext. 1.